



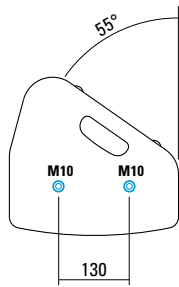
Multifunktionales und kompaktes 2-Wege System der Oberklasse. Der koaxiale Aufbau sorgt in Kombination mit einem aufwendig entwickelten und großflächigen Horn für ein absolut gleichmäßiges Übertragungsverhalten auch außerhalb der Hauptabstrahlachse. Hochleistungs-Neodymantriebe und Langhubschwingspulen sorgen für einen hohen Wirkungsgrad bei gleichzeitig stark reduzierten Verzerrungen. Für die Installation und den universellen Einsatz stehen neun M10 Gewindeeinätze zur Aufnahme des MultiRigg und weiteren Zubehörs zur Verfügung.

PRODUCT SPECIFICATIONS

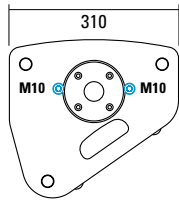
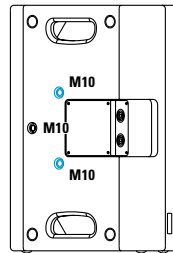
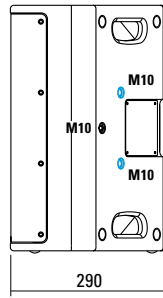
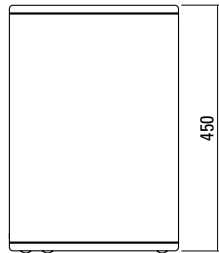
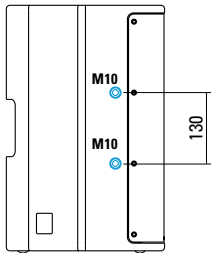
Speaker Components	10" Nd (3" VC) / 1" Nd (1,7" VC)
Description	Multifunctional Coaxial Sound System
Power AES / Peak	350 W / 1000 W
Impedance nominal	8 Ω
SPL 1 W / Peak @ 1 m	97 dB / 127 dB
Usable Range	60 Hz - 19 kHz (-6 dB)
Tuning Frequency Excursion minimum	70 Hz
X - Overpoint acoustical	1,2 kHz
Coverage horizontal / vertical	80° x 60° - rotatable
Connectors	2 x Neutrik Speakon NL4MP in/out Coding: 1 +/- HiMid, 2 +/- loop thru
Handles	2 x
Rigging / Fittings	9 x M10 To be used with MultiRigg™ 35 mm pole mount
Weight	12,5 kg
Size height x width x depth	45,0 x 31,0 x 29,0 cm
Order No.	01093



DIMENSIONS



4 x M10 Twinpoints for MultiRigg™



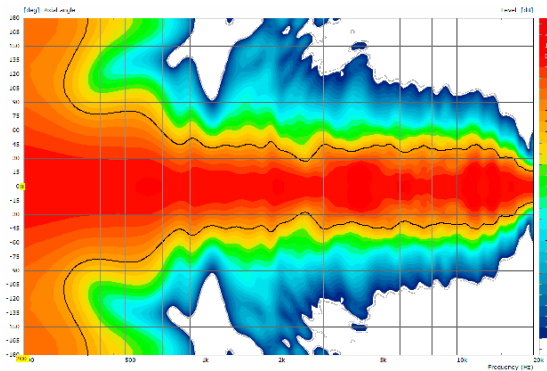
Controller Setups:



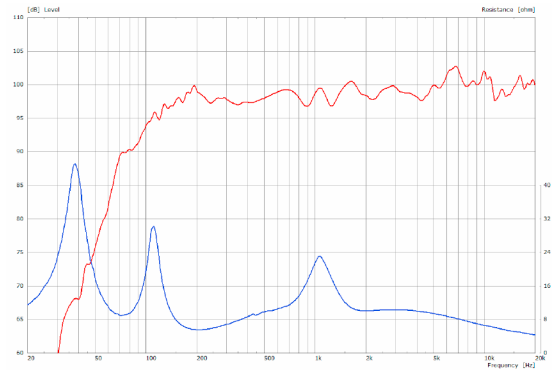
<https://www.seeburg.com/de/downloads>

MEASUREMENTS

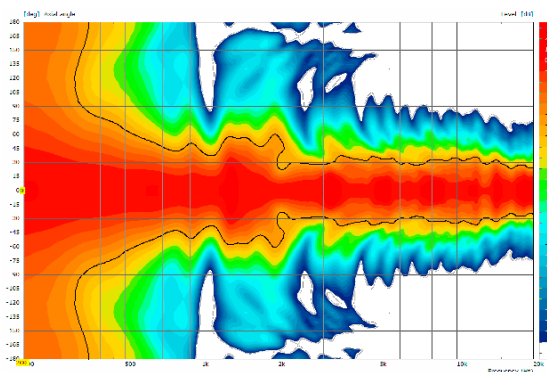
2D Directivity Plot - horizontal



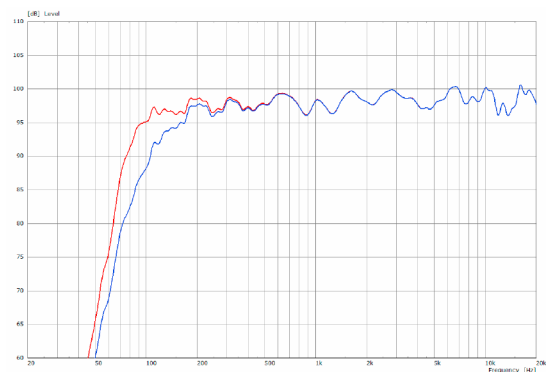
Sensitivity 1 W @ 1 m + Impedance



2D Directivity Plot - vertical



Frequency Response with Presets



MultiRigg™



swiveling fastening solution for horizontal and vertical alignment, for flown / ground stacked / mounted applications, incl. accessories (2 x knurled screw M10 x 20 mm, 1 x handle screw M8 x 55 mm), max. load 50 kg
Order No. **01360**

MultiRigg™ light



version for fixed installations, for horizontal and vertical alignment, incl. accessories (2 x M10 x 20 socket head screws), max. load 50 kg
Order No. **01362**

Handle Screw



for flying brackets, adjustable
M10 x 20
Order No. **08375/20**

Knurled Screw



M10 x 20 mm
Order No. **73750/w** (RAL 9010)
Order No. **73750**

Knurled Head Nut



reduction screw for fastening M10 Pole Mount Adapter (08126)
Order No. **73755**

Pole Mount Adapter



35 mm \varnothing → M10 x 16 mm, M8 x 20 star knob screw
Order No. **08126**

Steel Safety



6 mm x 600 mm, black, max. load 22 kg (BGI 810-3), quick connector undetachably
Order No. **01376/6**

TV Spigot



10 mm internal thread, 28 mm \varnothing
Order No. **08128**

Ring Screw



M10– DIN 580
Order No. **73700** (zincd)
Order No. **73700/sw** (black zincd)

Quick Trigger Clamp

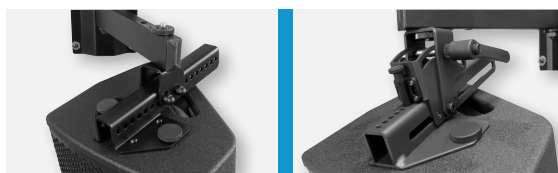


max. load 100 kg
Order No. **01223/100 kg**

Quick Trigger Clamp - small



M10, max. load 20 kg
Order No. **01223/20 kg**



ACCESSORIES X 4

Wall Mount



M10, max. load 15 kg,
for permanent installation,
incl. tilt angle stop
Order No. **08131/F**
Order No. **08131/F/w** (RAL 9010)

Wall Mount



with tilt unit, max. load 40 kg
Order No. **08130**

Wall Mount



for U-brackets, max. load 40 kg,
incl. (M10 x 70 mm socket head screw,
M10 hex lock nut and flat washer)
for 8"-12" speakers
Order No. **08130/F/269/w** (RAL 9010)
Order No. **08130/F/269**

Cover



for X 4,
padded
Order No. **01225/X4**

Rain Cover



for X 4,
with zipper
Order No. **01225/X4/outdoor**

Flight Case



for 2 pcs. X 4 and 2 pcs. MultiRigg,
partition walls, heavy duty, 9 mm
birch multiplex, PVC coated black,
6 x recessed sprung handles, 1 x
butterfly catch, 4 x 100 mm blue
wheels (2 pcs. with brake), interior
lined with felt
Size (H x W x D): 63 x 61,5 x 59 cm
Order No. **16560**



Flight Case



Rain Cover