



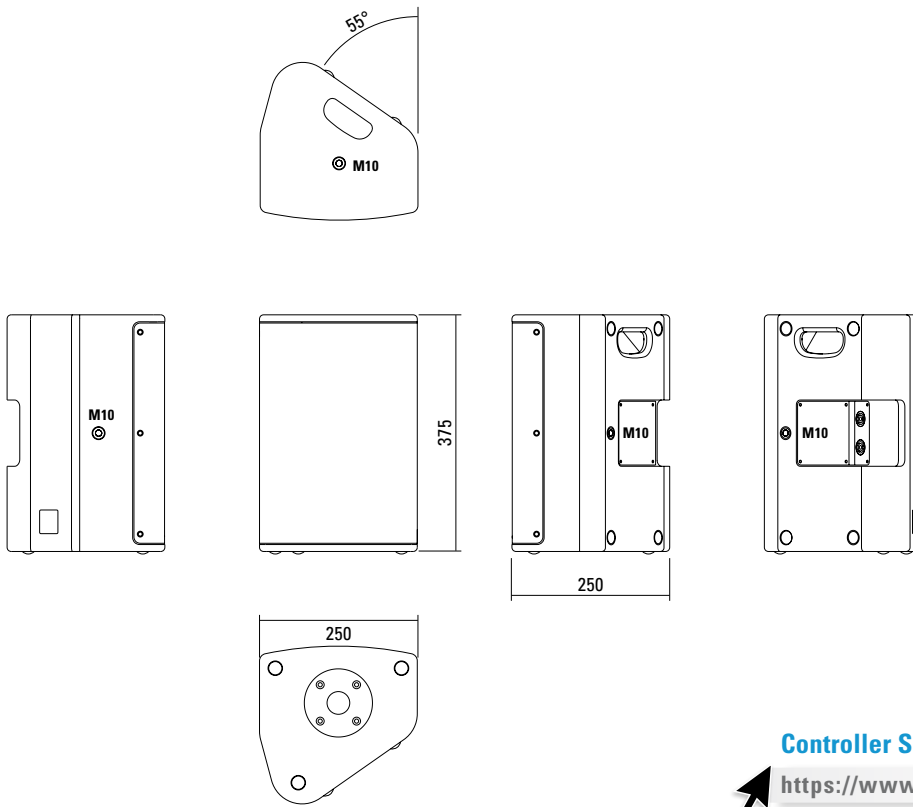
Multifunktionales und kompaktes 2-Wege System der Oberklasse. Der koaxiale Aufbau sorgt in Kombination mit einem aufwendig entwickelten und großflächigen Horn für ein absolut gleichmäßiges Übertragungsverhalten auch außerhalb der Hauptabstrahlachse. Hochleistungs-Neodymantriebe und Langhubschwingspulen sorgen für einen hohen Wirkungsgrad bei gleichzeitig stark reduzierten Verzerrungen. Für die Installation und den universellen Einsatz stehen drei M10 Gewindeeinsätze zur Aufnahme des Zubehörs zur Verfügung.

PRODUCT SPECIFICATIONS

Speaker Components	8" Nd (2,5" VC) / 1" Nd (1,7" VC)
Description	Multifunctional Coaxial Sound System
Power AES / Peak	250 W / 750 W
Impedance nominal	8 Ω
SPL 1 W / Peak @ 1 m	95 dB / 124 dB
Usable Range	70 Hz - 19 kHz (-6 dB)
Tuning Frequency Excursion minimum	80 Hz
X - Overpoint acoustical	1,6 kHz
Coverage horizontal / vertical	90° x 60° - rotatable
Connectors	2 x Neutrik Speakon NL4MP in/out Coding: 1 +/- HiMid, 2 +/- loop thru
Handles	1 x
Rigging / Fittings	3 x M10 35 mm pole mount
Weight	8 kg
Size height x width x depth	37,5 x 25,0 x 25,0 cm
Order No.	01091



DIMENSIONS

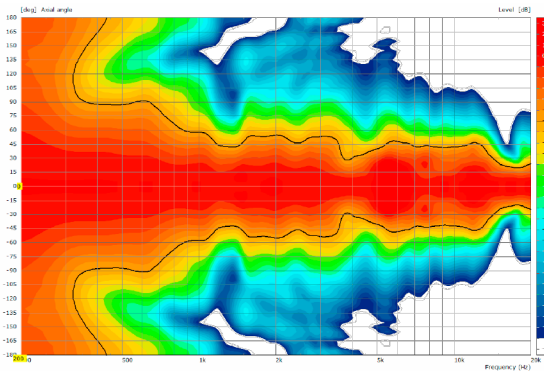


Controller Setups:

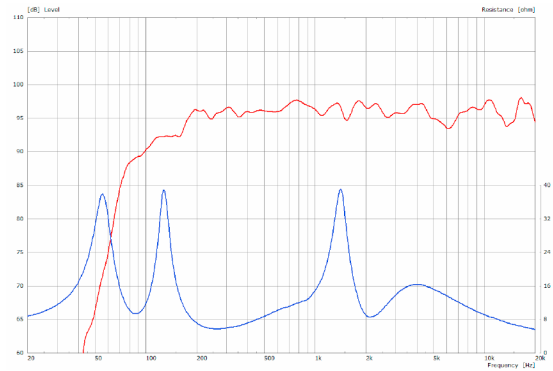
<https://www.seeburg.net/de/downloads>

MEASUREMENTS

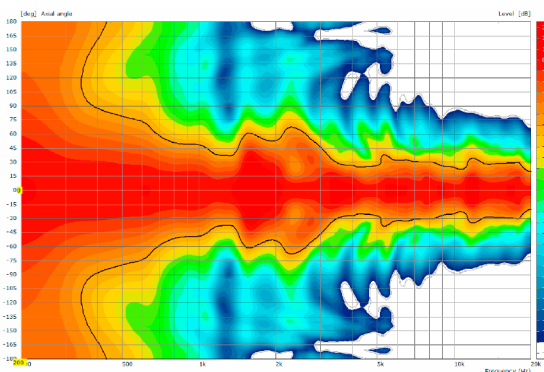
2D Directivity Plot - horizontal



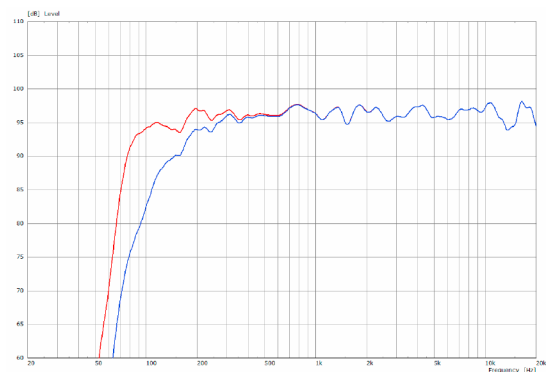
Sensitivity 1 W @ 1 m + Impedance



2D Directivity Plot - vertical



Frequency Response with Presets



Flying J-Bracket



for A 1 / GL 8 / X 1 / X 2 / TS Nano, horizontal and vertical alignment, incl. (white version: 1 x M10 x 20 socket head screws, black version: 1 x M10 x 20 adjustable handle screw)

Order No. **01212/J/set/w** (RAL 9010)
Order No. **01212/J/set**

Handle Screw



for flying brackets, adjustable
M10 x 20

Order No. **08375/20**

Flange



with ball and socket joint, with additional locking screw, M10 x 15, max. load 15 kg

Order No. **08125**

Knurled Head Nut



reduction screw for fastening M10 Pole Mount Adapter (08126)

Order No. **73755**

Pole Mount Adapter



35 mm \varnothing → M10 x 16 mm, M8 x 20 star knob screw

Order No. **08126**

Quick Trigger Clamp



max. load 100 kg

Order No. **01223/100 kg**

Quick Trigger Clamp - small



M10, max. load 20 kg

Order No. **01223/20 kg**

Truss Clamp



incl. M10 Adapter, max. load 15 kg

Order No. **01221**

Ring Screw



M10– DIN 580

Order No. **73700** (zincd)

Order No. **73700/sw** (black zincd)

Steel Safety



4 mm x 600 mm, black, max. load 10 kg (BGI 810-3), quick connector undetachably

Order No. **01376/4**



ACCESSORIES X 2

Wall Mount



ball and socket joint flange (08125)
+ 08125/plate
Order No. **08125/set**

Wall Mount



M10, max. load 15 kg,
for permanent installation,
incl. tilt angle stop
Order No. **08131/F**
Order No. **08131/F/w** (RAL 9010)

Wall Mount



with tilt unit, max. load 40 kg
Order No. **08130**

Wall Mount



for U-brackets, max. load 40 kg,
incl. screws
(M10 x 70 mm socket head screw,
M10 hex lock nut and flat washer)
for 8"-12" speakers
Order No. **08130/F/269**
Order No. **08130/F/269/w** (RAL 9010)

Bag



for 2 x X 2 / 2 x TSM 8, padded
with pocket for accessories
Order No. **01245**

Flight Case Trunk



for 4 pcs. X 2, 4 x partition walls for
X 2 + accessories, heavy duty, 9 mm
birch multiplex, PVC coated black,
6 x recessed sprung handles, 2 x large
butterfly catches, 4 x 100 mm blue
wheels (2 pcs. with brake), interior
lined with felt, 29 kg
Size (H x W x D): 58 x 74 x 60 cm
Order No. **16555/4**



Flight Case

