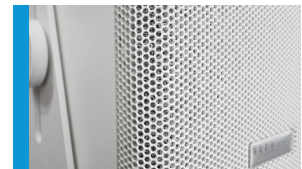




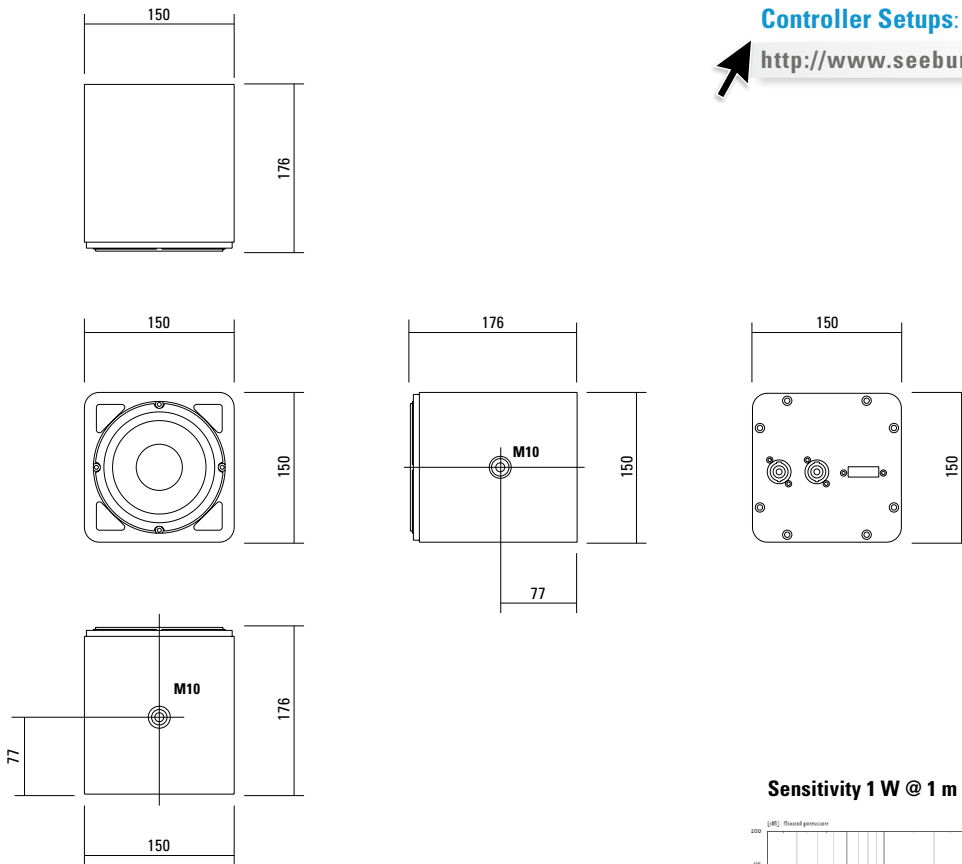
Ultrakompaktes Lautsprechersystem für alle Anwendungen, bei denen eine besonders unauffällige Erscheinung, gute Klangeigenschaften und Leistungsdaten gefordert werden. Der kräftige 5" Neodym Koaxial Lautsprecher strahlt sehr breit und präzise ab und erreicht einen unverzerrten Pegel von über 115 dB. Umfangreiche Fliegepunkte, vielfältige Anschlussmöglichkeiten und der serienmäßige Bügel machen das i5 System zu einem universellen Beschallungswerkzeug für viele Nahfeldanwendungen.

## PRODUCT SPECIFICATIONS

<b>Speaker Components</b>	5" Nd (1,5" VC) / 0,75" coaxial
<b>Description</b>	Multi Media Sound System
<b>Power</b> AES / Peak	120 W / 360 W
<b>Impedance</b> nominal	16 Ω
<b>SPL</b> 1 W / Peak @ 1 m	93 dB / 115 dB
<b>Usable Range</b>	110 Hz - 19 kHz (-6 dB)
<b>Tuning Frequency</b> excursion minimum	120 Hz
<b>X-Overpoint</b> acoustical	3,0 kHz
<b>Coverage</b> horizontal / vertical	100° - conical
<b>Max. Splay Angle</b>	---
<b>Connectors</b>	2 x Neutrik Speakon NL4MP in/out Coding: 1 +/- HiMid, 2 +/- loop thru 1 x Phoenix
<b>Handles</b>	---
<b>Rigging / Fittings</b>	3 x M10
<b>Weight</b>	2,5 kg
<b>Size</b> height x width x depth	15,0 x 15,0 x 17,6 cm
<b>Order No.</b>	<b>00160/black</b> <b>00160/white</b> (RAL 9010)



## DIMENSIONS

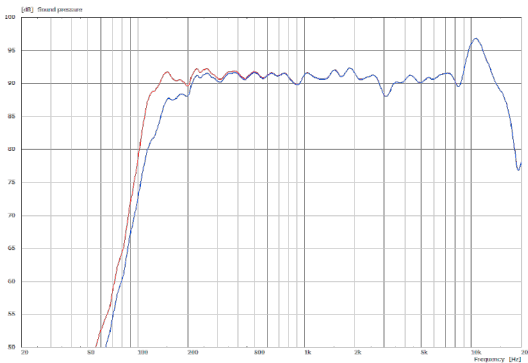


### Controller Setups:

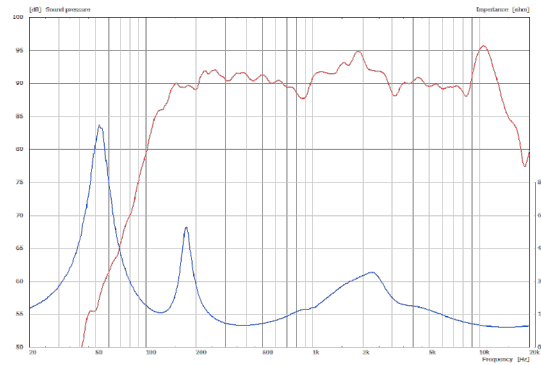
<http://www.seeburg.net/de/downloads>

## MEASUREMENTS

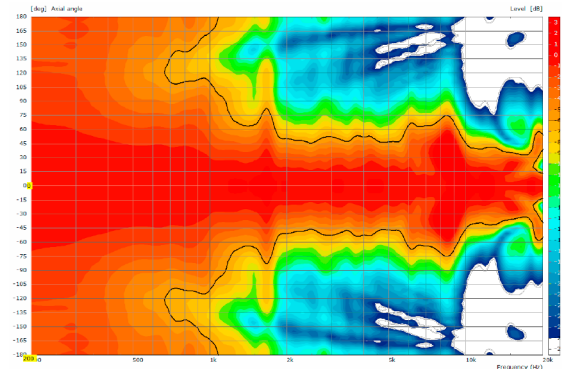
### Frequency Response with Presets



### Sensitivity 1 W @ 1 m + Impedance



### 2D Directivity Plot - radial



## ACCESSORIES i5

### Flying Bracket



for i 5,  
incl. socket screws,  
2 x M10 x 20 mm  
Order No. **01204**  
Order No. **01204/w** (RAL 9010)

### Knurled Screw



M10 x 20 mm  
Order No. **73750**  
Order No. **73750/w** (RAL 9010)

### Phoenix Connector



2 pol Order No. **08257**  
4 pol Order No. **08256**

### Doughty Twenty Clamp



M10, max. load 20 kg  
Order No. **01223/20 kg**

### Truss Clamp



incl. M10 Adapter,  
max. load 15 kg  
Order No. **01221**

### Flange



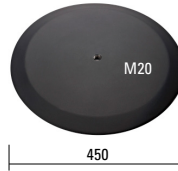
with ball and socket joint,  
with additional locking screw,  
M10 x 15, max. load 15 kg  
Order No. **08125**

### Steel Safety



4 mm x 600 mm, black,  
max. load 10 kg (BGI 810-3),  
quick connector undetachably  
Order No. **01376/4**

### Base Plate, Round



M20, K&M,  
ø 450 mm, height: 21 mm  
black zinc die-cast, felt strips on  
the bottom, weight: 6,7 kg  
Order No. **01278/round**

### Speaker Pole, Light

adjustable, K&M,  
incl. M20 Adapter  
Order No. **03004/set**



### Flight Case



for 4 pcs. i 5, with mounted flying  
brackets 01204, standard, 7,0 mm  
birch multiplex, PVC coated, partition  
walls, hinged lid, 2 x recessed sprung  
handles, 1 x butterfly catch, rubber  
feet, interior lined with felt.  
Size (H x W x D): 24,0 x 42,0 x 36,0 cm  
Order No. **16454**

### Flight Case



for 2 pcs. i 5, with mounted flying  
brackets 01204, standard, 7,0 mm  
birch multiplex, PVC coated, partition  
walls, hinged lid, 1 x recessed sprung  
handle, 1 x butterfly catch, rubber feet,  
interior lined with felt.  
Size (H x W x D): 24,0 x 42,0 x 19,0 cm  
Order No. **16453**

