



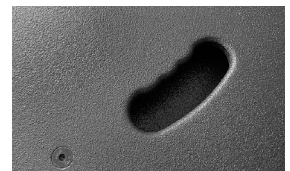
Multifunktionales 10" Nd / 1" System mit ausgewogenen Klangeigenschaften im kompakten Format. Geringes Gewicht durch Neodym-Bestückung. Gute Basswiedergabe auch ohne Controller. Diverse M8 und M10 Aufnahmepunkte sorgen für die einfache Montage des Zubehörs. Auch als Festinstallationsvariante lieferbar.

PRODUCT SPECIFICATIONS

Speaker Components	10" Nd / 1"
Description	Multi Purpose Sound System
Power AES / Peak	300 W / 900 W
Impedance nominal	8 Ω
SPL 1 W / Peak @ 1 m	95 dB / 123 dB
Usable Range	60 Hz - 20 kHz (-6 dB)
Tuning Frequency Excursion minimum	65 Hz
X - Overpoint acoustical	1,6 kHz
Coverage horizontal / vertical	90° x 60° - rotatable
Max. Splay Angle	- - -
Connectors	2 x Neutrik Speakon NL4MP in/out Coding: 1 +/- HiMid, 2 +/- loop thru
Handles	1 x
Rigging / Fittings	2 x M10 / 7 x M8 4 x M10 / 7 x M8 (installation version) 35 mm pole mount
Weight	13 kg
Size height x width x depth	51,5 x 32,4 x 30,6 cm
Order No.	00250/II 00250/AF/II (installation version)



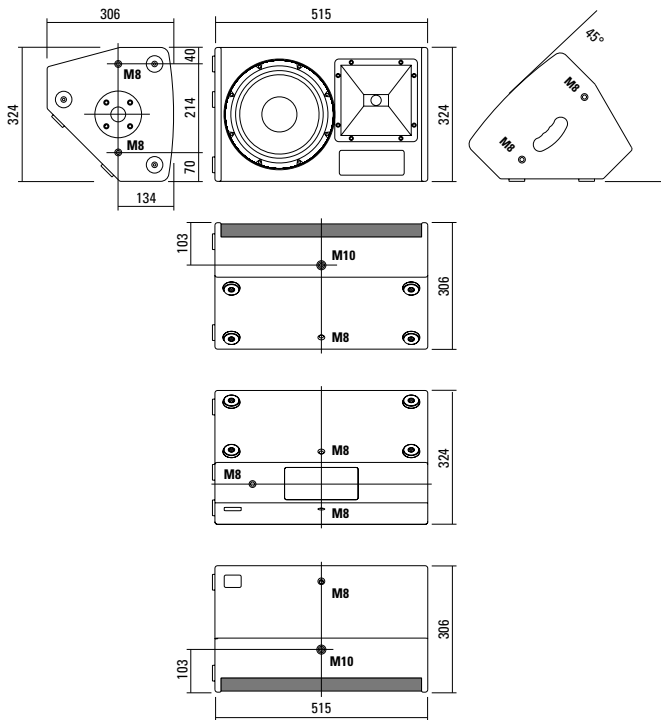
Der hochbelastbare 1" Treiber, in Kombination mit dem drehbaren Horn, sorgt für eine hohe klangliche Präzision.



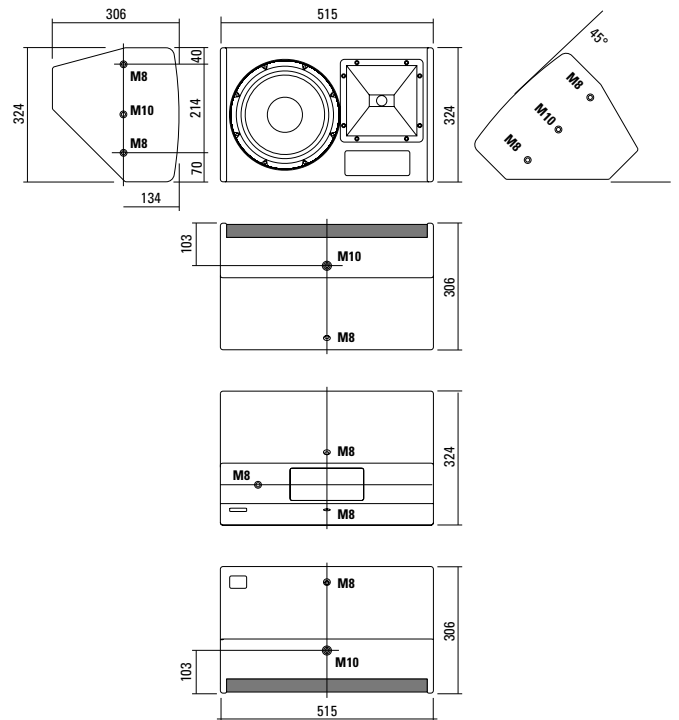
Ergonomischer Griff auf der Oberseite.



DIMENSIONS



Installation Version AF 4

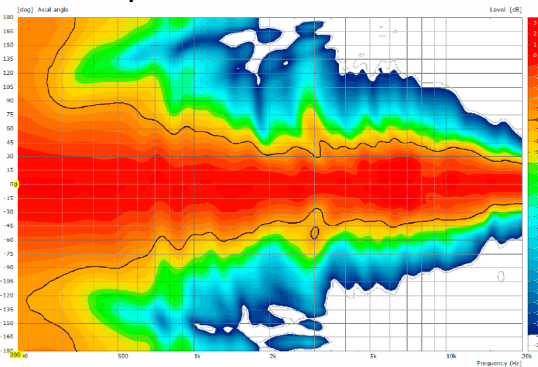


Controller Setups:

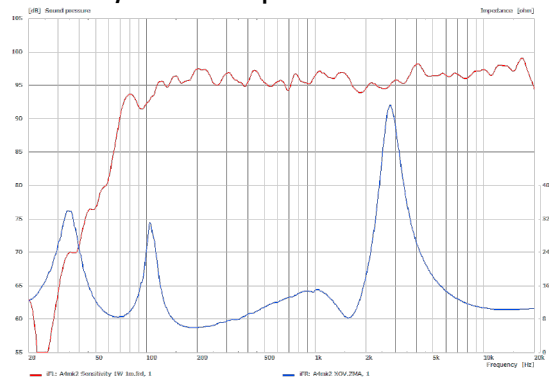
<https://www.seeburg.com/de/downloads>

MEASUREMENTS

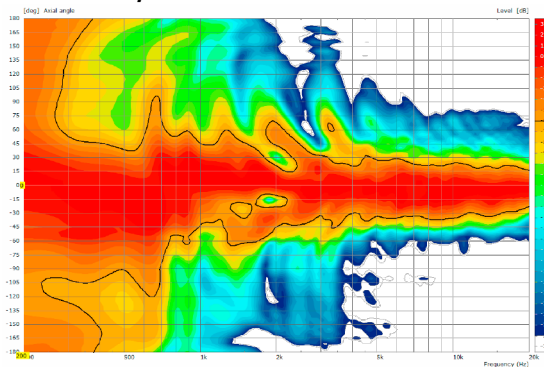
2D Directivity Plot - horizontal



Sensitivity 1 W @ 1 m + Impedance



2D Directivity Plot - vertical



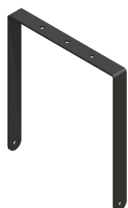
Flying Bracket



for A 4 / TSM 10 horizontal alignment,
incl. accessories

Order No. **01220/H/set/w** (RAL 9010)
Order No. **01220/H/set**

Flying Bracket



for A 4 / TSM 10
incl. (black version: 2 x M10 x 20
handle screws, 2 x rubber washers
white version: 2 x M10 x 20 socket head
screws, 2 x rubber washers)

Order No. **01220/set/w** (RAL 9010)
Order No. **01220/set**

Flying Bracket



for AF 4 horizontal alignment,
incl. (2 x M10 x 20 socket head
screws, 2 x rubber washers)

Order No. **01220/H/AF4/w** (RAL 9010)
Order No. **01220/H/AF4**

Handle Screw



for flying brackets, adjustable

Order No. **08375/20** (M10 x 20)

Rubber Washer



for flying brackets,
5 mm x 40 mm Ø

Order No. **01206**

Knurled Head Nut



reduction screw for fastening
M10 Pole Mount Adapter (08126)

Order No. **73755**

Pole Mount Adapter



35 mm Ø → M10 x 16 mm,
M8 x 20 star knob screw

Order No. **08126**

Flange



with ball and socket joint,
with additional locking screw,
M10 x 15, max. load 15 kg

Order No. **08125**

TV Spigot



10 mm internal thread,
28 mm Ø

Order No. **08128**

Quick Trigger Clamp



max. load 100 kg

Order No. **01223/100 kg**

Quick Trigger Clamp - small



M10, max. load 20 kg

Order No. **01223/20 kg**

Truss Clamp



incl. M10 Adapter,
max. load 15 kg

Order No. **01221**

Steel Safety



6 mm x 600 mm, black,
max. load 22 kg (BGI 810-3),
quick connector undetachably

Order No. **01376/6**

Ring Screw



M10– DIN 580

Order No. **73700** (zincd)

Order No. **73700/sw** (black zincd)

Chain Fastener



VBS 7 mm

Order No. **01378**

Wall Mount



for U-brackets, max. load 40 kg,
incl. (M10 x 70 mm socket head screw,
M10 hex lock nut and flat washer)

for 8"-12" speakers

Order No. **08130/F/269/w** (RAL 9010)

Order No. **08130/F/269**

Wall Mount



with tilt unit, max. load 40 kg

Order No. **08130**

ACCESSORIES A 4

Speaker Stand



K&M, incl. wind up,
height 138,5 to 218 cm,
max. load 50 kg,

Order No. **03011**

K&M, height 137,5 to 218,5 cm,
max. load 50 kg,

Order No. **03010**

Cover



for A 4 / TSM 10,
padded

Order No. **01242**

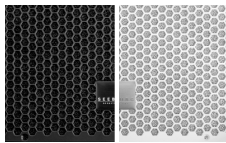
Rain Cover



for A 4 / TSM 10

Order No. **01242/outdoor**

Honeycomb Grilles

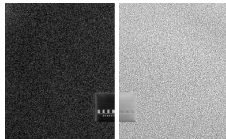


for A 4 front replacement.

Foam behind grille

Order No. **97008/hex/compl**

Order No. **97008/hex/compl/w**
(RAL 9010)

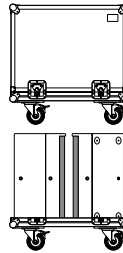


Foam in front of grille

Order No. **97008/compl**

Order No. **97008/compl/w**
(RAL 9010)

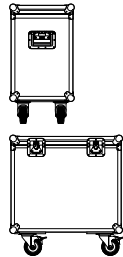
Flight Case



for 2 pcs. TSM 10 / A 4,
heavy duty, 9 mm birch multiplex,
PVC coated, 2 x recessed sprung
handles, 4 x butterfly catches,
4 x 100 mm blue wheels, 2 pcs. with
brake, interior lined with felt.

Order No. **16049**

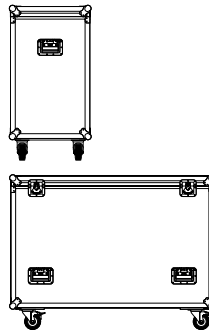
Flight Case Trunk



for 2 pcs. TSM 10 / A 4
and accessories, heavy duty,
9 mm birch multiplex, PVC coated,
hinged lid, 6 x recessed sprung handles,
2 x butterfly catches, 4 x 100 mm blue
wheels, 2 pcs. with brake, interior lined
with felt.

Order No. **16060**

Flight Case Trunk



for 4 pcs. TSM 10 / A 4
with flying brackets 01220,
heavy duty, 9 mm birch multiplex,
PVC coated, 6 x recessed sprung
handles, 2 x butterfly catches,
4 x 100 mm blue wheels, 2 pcs. with
brake, interior lined with felt.

Order No. **16063**

