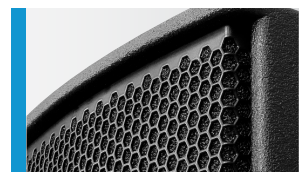




Leistungsstarkes und universelles Mittelhochtonsystem in dipolarer 2 x 8" Nd / 1" Anordnung. Gute Eignung als kräftiges Topteil in Kombination mit Subwoofern und als „Stand Alone“ System zur Sprachübertragung auf kleinen und mittleren Distanzen. Vier M10 Aufnahmepunkte (optional fünf bei Austausch gegen die werkseitig montierte HS-Flanschbuchse) ermöglichen in Kombination mit dem Zubehör eine einfache Installation in Horizontal- und Vertikal- ausrichtung.

## PRODUCT SPECIFICATIONS

<b>Speaker Components</b>	2 x 8" Nd / 1"
<b>Description</b>	HiMid Sound System
<b>Power</b> AES / Peak	500 W / 1500 W
<b>Impedance</b> nominal	4 Ω (16 Ω optional)
<b>SPL</b> 1 W / Peak @ 1 m	100 dB / 132 dB
<b>Usable Range</b>	80 Hz - 20 kHz (-6 dB)
<b>Tuning Frequency</b> excursion minimum	90 Hz
<b>X - Overpoint</b> acoustical	1,4 kHz
<b>Coverage</b> horizontal / vertical	90° x 60° rotatable
<b>Connectors</b>	2 x Neutrik Speakon NL4MP in/out Coding: 1 +/- HiMid, 2 +/- loop through
<b>Handles</b>	1 x
<b>Rigging / Fittings</b>	4 x M10, 2 x M6 35 mm pole mount
<b>Weight</b>	12,5 kg
<b>Size</b> height x width x depth	59,0 x 25,0 x 25,0 cm
<b>Order No.</b>	<b>00240/ II</b>

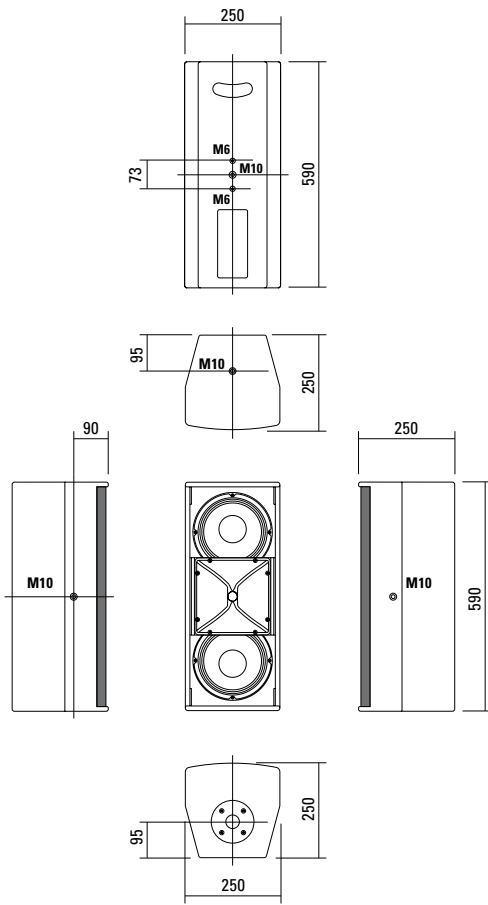


Anschlussfeld mit Neutrik Speakonbuchsen auf der Rückseite.



Ergonomisch geformte Griffausfräsung in der Rückwand für den bequemen Transport.

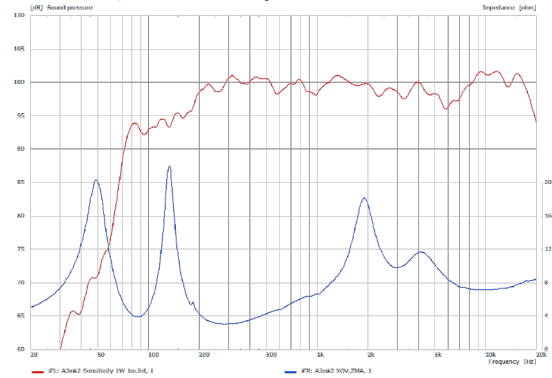
## DIMENSIONS



### Controller Setups:

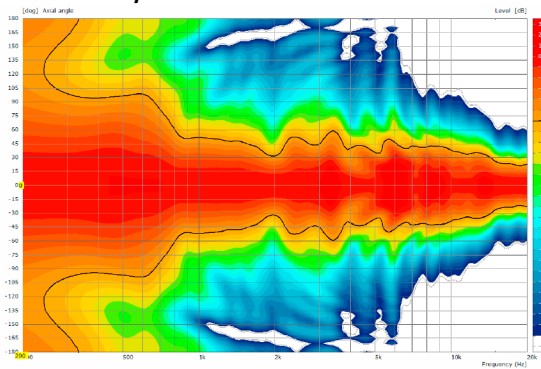
<https://www.seeburg.com/de/downloads>

### Sensitivity 1 W @ 1 m + Impedance

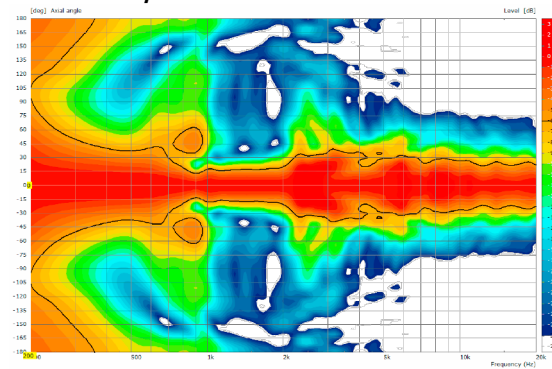


## COVERAGE PATTERNS

### 2D Directivity Plot - horizontal



### 2D Directivity Plot - vertical



**Flying Bracket**



for A 3  
horizontal alignment,  
incl. (2 x M10 x 20 socket head  
screws, 2 x rubber washers,  
1 x plate)

Order No. **01215/H/set/w** (RAL 9010)  
Order No. **01215/H/set**

**Flying Bracket**



for A 3  
incl. (black version: 2 x M10 x 20  
handle screws, 2 x rubber washers  
white version: 2 x M10 x 20 socket  
head screws, 2 x rubber washers)

Order No. **01215/set/w** (RAL 9010)  
Order No. **01215/set**

**Handle Screw**



for flying brackets, adjustable

Order No. **08375/20** (M10 x 20)

**Rubber Washer**



for flying brackets,  
5 mm x 40 mm Ø

Order No. **01206**

**Plate**



for A 2 / A 3 flying brackets,  
horizontal alignment,  
replacement for pole mount flange,  
110 mm Ø flange with M10 nut

Order No. **08119/M10/w** (RAL 9010)  
Order No. **08119/M10**

**Knurled Head Nut**



reduction screw for fastening  
M10 Pole Mount Adapter (08126)

Order No. **73755**

**Pole Mount Adapter**



35 mm Ø → M10 x 16 mm,  
M8 x 20 star knob screw

Order No. **08126**

**Flange**



with ball and socket joint,  
with additional locking screw,  
M10 x 15, max. load 15 kg

Order No. **08125**

**Quick Trigger Clamp**



max. load 100 kg

Order No. **01223/100 kg**

**Quick Trigger Clamp - small**



M10, max. load 20 kg

Order No. **01223/20 kg**

**Truss Clamp**



incl. M10 Adapter,  
max. load 15 kg

Order No. **01221**

**Steel Safety**



6 mm x 600 mm, black,  
max. load 22 kg (BGI 810-3),  
quick connector undetachably

Order No. **01376/6**

**Ring Screw**



M10– DIN 580

Order No. **73700** (zincd)

Order No. **73700/sw** (black zincd)

**TV Spigot**



10 mm internal thread,  
28 mm Ø

Order No. **08128**



## ACCESSORIES A 3

### Wall Mount



ball and socket joint flange (08125)  
+ 08125/plate  
Order No. **08125/set**

### Wall Mount



for U-brackets, max. load 40 kg,  
incl. screws  
(M10 x 70 mm socket head screw,  
M10 hex lock nut and flat washer)  
for 8"-12" speakers  
Order No. **08130/F269**

### Wall Mount



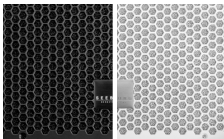
2 x M6 fixing holes (d=73 mm),  
1 x M10 fixing hole (center),  
max. load 25 kg  
Order No. **03034**

### Spacer



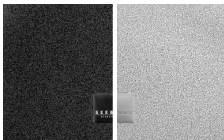
for Wall Mount (03034),  
polyurea coated  
Order No. **03034/spc**

### Honeycomb Grilles



for A 3 front replacement.  
Foam behind grille

Order No. **97006/hex/compl**  
Order No. **97006/hex/compl/w**  
(RAL 9010)



Foam in front of grille

Order No. **97006/compl.**  
Order No. **97006/compl/w**  
(RAL 9010)

### Speaker Stand



K&M, incl. wind up,  
height 138,5 to 218 cm,  
max. load 50 kg,  
Order No. **03011**

K&M, height 137,5 to 218,5 cm,  
max. load 50 kg,  
Order No. **03010**

### Cover



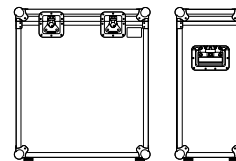
for A 3, padded  
Order No. **01258**

### Rain Cover



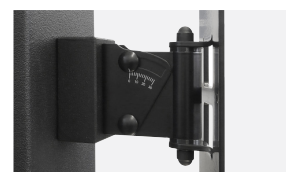
for A 3  
Order No. **01258/outdoor**

### Flight Case Trunk



for 2 pcs. A 3 and accessories,  
standard, 7 mm birch multiplex,  
PVC coated, hinged lid, 2 x recessed  
sprung handles, 2 x butterfly catches,  
4 x 100 mm blue wheels, 2 pcs. with  
brake, rubber feet, partition walls,  
interior lined with felt.

Order No. **16066**



Spacer -> Wall Mount