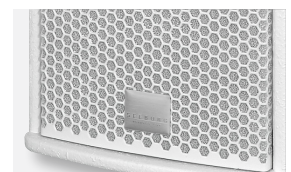
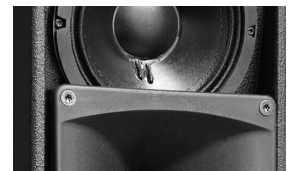
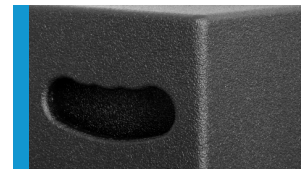




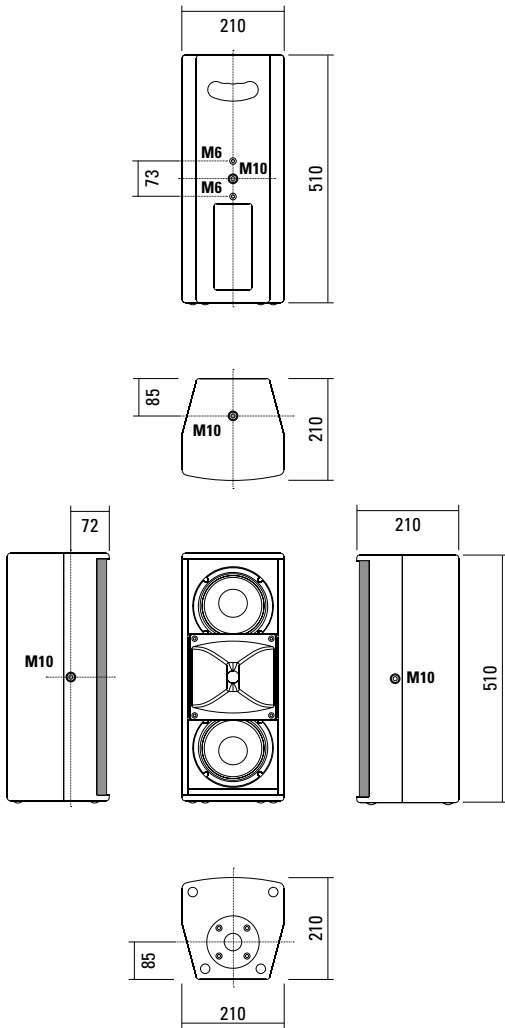
Unauffällig elegantes und kräftiges System für die Festinstallation und Industriepäsentation. Die optimierte 2 x 6,5" / 1" Treiber Konfiguration mit großem Horn sorgt für gutes Abstrahlverhalten, Sprachverständlichkeit und Reichweite. Vier M10 Aufnahmepunkte (optional fünf bei Austausch gegen die werkseitig montierte HS-Flanschbuchse) ermöglichen in Kombination mit dem Zubehör eine einfache Installation in Horizontal- und Vertikal-ausrichtung.

PRODUCT SPECIFICATIONS

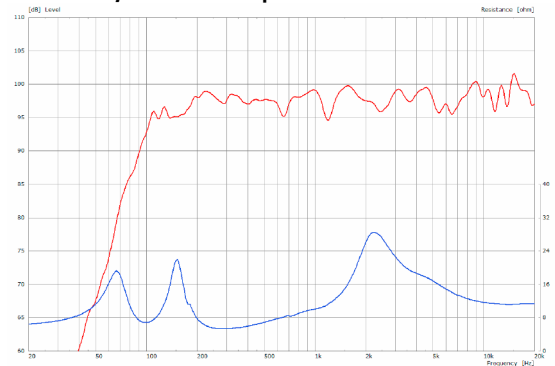
Speaker Components	2 x 6,5" Nd (2" VC) / 1" (1,7" VC)
Description	HiMid Sound System
Power AES / Peak	400 W / 1200 W
Impedance nominal	8 Ω
SPL 1 W / Peak @ 1 m	97 dB / 128 dB
Usable Range	80 Hz - 19 kHz
Tuning Frequency excursion minimum	95 Hz
X - Overpoint acoustical	1,5 kHz
Coverage horizontal / vertical	90° x 60° - rotatable
Max. Splay Angle	- - -
Connectors	2 x Neutrik Speakon NL4MP in/out Coding: 1 +/- HiMid, 2 +/- loop thru
Handles	1 x
Rigging / Fittings	4 x M10, 2 x M6 35 mm pole mount
Weight	9,5 kg
Size height x width x depth	51,0 x 21,0 x 21,0 cm
Order No.	00230/III



DIMENSIONS

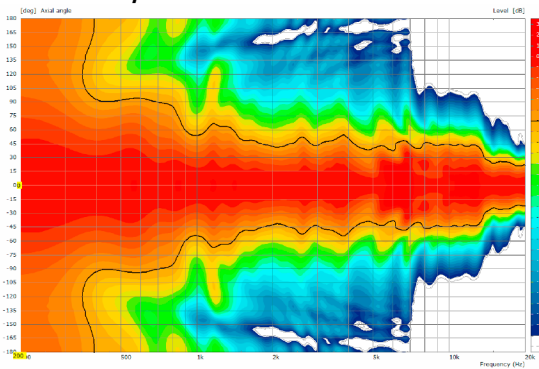


Sensitivity 1 W @ 1 m + Impedance

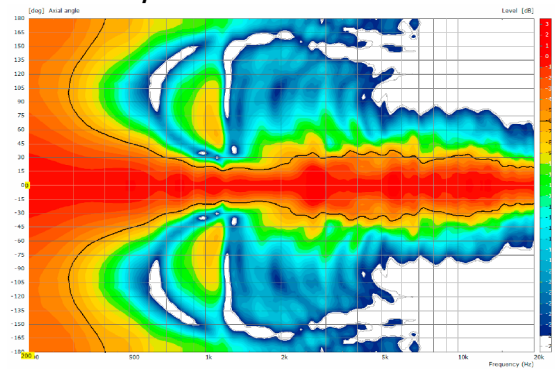


COVERAGE PATTERNS

2D Directivity Plot - horizontal



2D Directivity Plot - vertical



Flying Bracket



for A 2,
horizontal alignment,
incl. (2 x M10 x 20 socket head
screws, 2 x rubber washers, 1 x plate)

Order No. **01214/H/set/w** (RAL 9010)
Order No. **01214/H/set**

Flying Bracket



for A 2,
incl. (black version: 2 x M10 x 20
knurled screws, 2 x rubber washers
white version: 2 x M10 x 20 socket
head screws, 2 x rubber washers)

Order No. **01214/set/w** (RAL 9010)
Order No. **01214/set**

Knurled Screw

M10 x 20 mm

Order No. **73750/w** (RAL 9010)
Order No. **73750**



Rubber Washer

for flying brackets,
5 mm x 40 mm Ø

Order No. **01206**



Plate

for A 2 / A 3 flying brackets,
horizontal alignment,
replacement for pole mount flange,
110 mm Ø flange with M10 nut

Order No. **08119/M10/w** (RAL 9010)
Order No. **08119/M10**



Knurled Head Nut

reduction screw for fastening
M10 Pole Mount Adapter (08126)

Order No. **73755**



Pole Mount Adapter

35 mm Ø → M10 x 16 mm,
M8 x 20 star knob screw

Order No. **08126**



Flange

with ball and socket joint,
with additional locking screw,
M10 x 15, max. load 15 kg

Order No. **08125**



Quick Trigger Clamp

max. load 100 kg

Order No. **01223/100 kg**



Quick Trigger Clamp - small

M10, max. load 20 kg

Order No. **01223/20 kg**



Truss Clamp

incl. M10 Adapter,
max. load 15 kg

Order No. **01221**



Steel Safety

4 mm x 600 mm, black,
max. load 10 kg (BGI 810-3),
quick connector undetachably

Order No. **01376/4**



Ring Screw

M10– DIN 580

Order No. **73700** (zincd)

Order No. **73700/sw** (black zincd)



TV Spigot

10 mm internal thread,
28 mm Ø

Order No. **08128**



ACCESSORIES A 2

Wall Mount



ball and socket joint flange (08125)
+ 08125/plate
Order No. **08125/set**

Wall Mount



for U-brackets, max. load 40 kg,
incl. (M10 x 70 mm socket head screw,
M10 hex lock nut and flat washer)
for 8"-12" speakers
Order No. **08130/F/269/w** (RAL 9010)
Order No. **08130/F/269**

Wall Mount



M10, max. load 15 kg,
for permanent installation,
incl. tilt angle stop
Order No. **08131/F/w** (RAL 9010)
Order No. **08131/F**

Wall Mount



2 x M6 fixing holes (d=73 mm),
1 x M10 fixing hole (center),
max. load 25 kg
Order No. **03034**

Spacer



for Wall Mount (03034)
polyurea coated
Order No. **03034/spc**

Cover



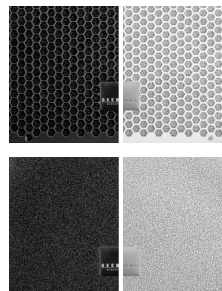
for A 2, padded
Order No. **01243**

Rain Cover



for A 2,
with zipper
Order No. **01243/outdoor**

Honeycomb Grilles



for A 2 front replacement.

Foam behind grille

Order No. **97004/hex/compl**
Order No. **97004/hex/compl/w**
(RAL 9010)

Foam in front of grille

Order No. **97004/compl**
Order No. **97004/compl/w**
(RAL 9010)



Spacer -> Wall Mount