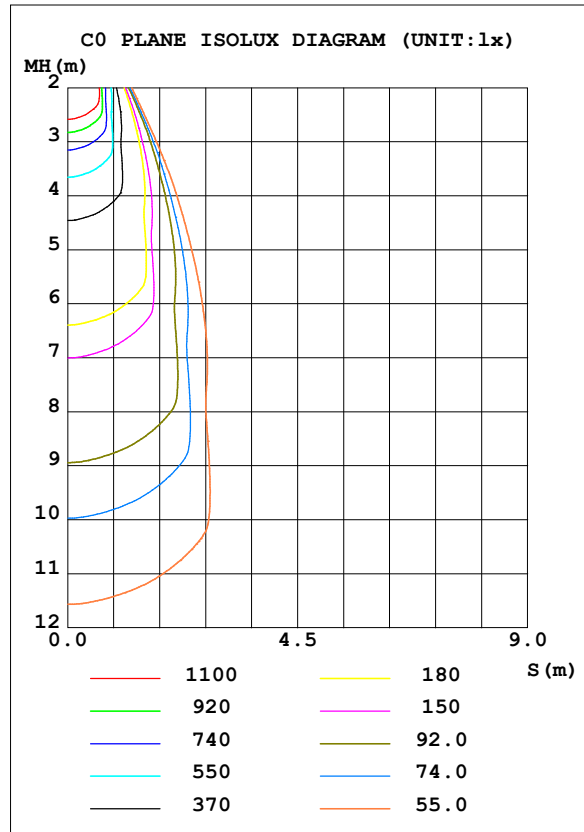
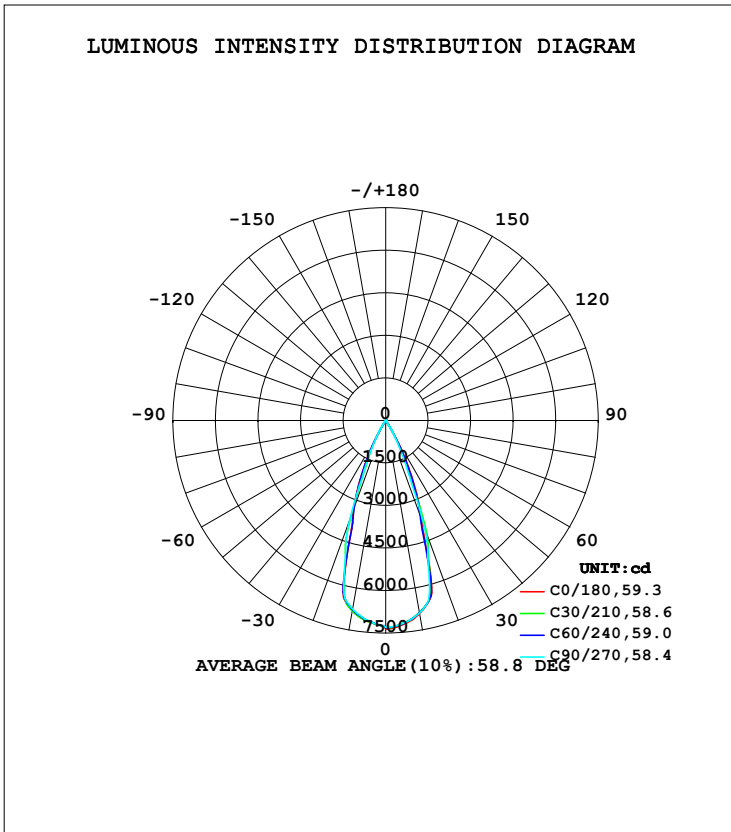




LUMINAIRE PHOTOMETRIC TEST REPORT

NAME: H	DIM.:	WEIGHT:
MFR.: CLF		

DATA OF LAMP		PHOTOMETRIC DATA Eff: 10.71 lm/W			
MODEL	Poseidon wash Xs	I _{max} (cd)	7358	S/MH(C0/180)	0.61
NOMINAL POWER(W)	360	LOR(%)	100.0	S/MH(C90/270)	0.58
RATED VOLTAGE(V)	220.0	TOTAL FLUX(lm)	3164.7	η UP, DN(C0-180)	0.0, 51.1
NOMINAL FLUX(lm)	452.098	CIE CLASS	DIRECT	η UP, DN(C180-360)	0.0, 48.9
LAMPS INSIDE	7	η up(%)	0.0	CIBSE SHR NOM	0.50
TEST VOLTAGE(V)	220.0	η down(%)	100.0	CIBSE SHR MAX	0.60



C Range: 0 - 360DEG
 C Interval: 30.0DEG
 Test Speed: HIGH
 Temperature: 25.3DEG
 Operators: Danny
 Test Date: 2022-03-18

γ Range: 0 - 90DEG
 γ Interval: 0.5DEG
 Test System: EVERFINE GO-HD5 SYSTEM V2.0.407.13
 Humidity: 65.0%
 Test Distance: 9.400m [K=1.0000]
 Remarks:



ZONAL FLUX DIAGRAM

ZONAL FLUX DIAGRAM:

γ	C0	C45	C90	C135	C180	C225	C270	C315	γ	Φ zone	Φ total	%lum, lamp
10	6912	6878	6888	6824	6811	6798	6751	6806	0- 10	672.1	672.1	21.2,21.2
20	3710	3902	4007	3523	3313	3392	3668	3847	10- 20	1537	2209	69.8,69.8
30	783.9	708.9	636.8	605.6	541.6	555.0	604.0	649.0	20- 30	833.9	3043	96.1,96.1
40	11.53	12.86	13.19	11.10	10.09	10.80	12.21	12.38	30- 40	110.6	3153	99.6,99.6
50	4.418	4.781	4.970	4.011	3.882	4.153	4.677	4.741	40- 50	5.597	3159	99.8,99.8
60	1.698	2.013	2.303	1.591	1.521	1.878	2.178	2.085	50- 60	2.582	3161	99.9,99.9
70	1.208	1.376	1.570	1.152	1.157	1.372	1.494	1.405	60- 70	1.541	3163	99.9,99.9
80	0.8788	0.9332	1.021	0.8063	0.8108	0.9244	0.9536	0.9370	70- 80	1.198	3164	100,100
90	0.1857	0.1732	0.1520	0.1393	0.1435	0.1435	0.1435	0.1815	80- 90	0.6081	3165	100,100
100									90-100			
110									100-110			
120									110-120			
130									120-130			
140									130-140			
150									140-150			
160									150-160			
170									160-170			
180									170-180			
DEG	LUMINOUS INTENSITY:cd									UNIT: lm		

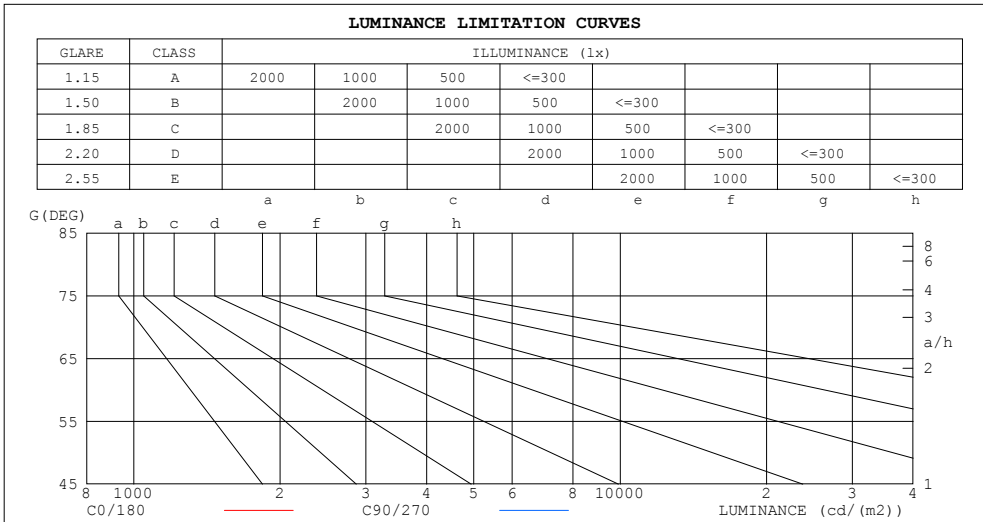
C Range: 0 - 360DEG
 C Interval: 30.0DEG
 Test Speed: HIGH
 Temperature:25.3DEG
 Operators:Danny
 Test Date:2022-03-18

γ Range: 0 - 90DEG
 γ Interval: 0.5DEG
 Test System:EVERFINE GO-HD5 SYSTEM V2.0.407.13
 Humidity:65.0%
 Test Distance:9.400m [K=1.0000]
 Remarks:



LUMINANCE LIMITATION CURVES

NAME: H	DIM.:	WEIGHT:
MFR.: CLF		



LUMINANCE cd/(m2)		
G (DEG)	C0/180	C90/270
85	75	75
80	51	59
75	41	51
70	35	46
65	32	44
60	34	46
55	45	58
50	69	77
45	95	111

C Range: 0 - 360DEG
 C Interval: 30.0DEG
 Test Speed: HIGH
 Temperature: 25.3DEG
 Operators: Danny
 Test Date: 2022-03-18

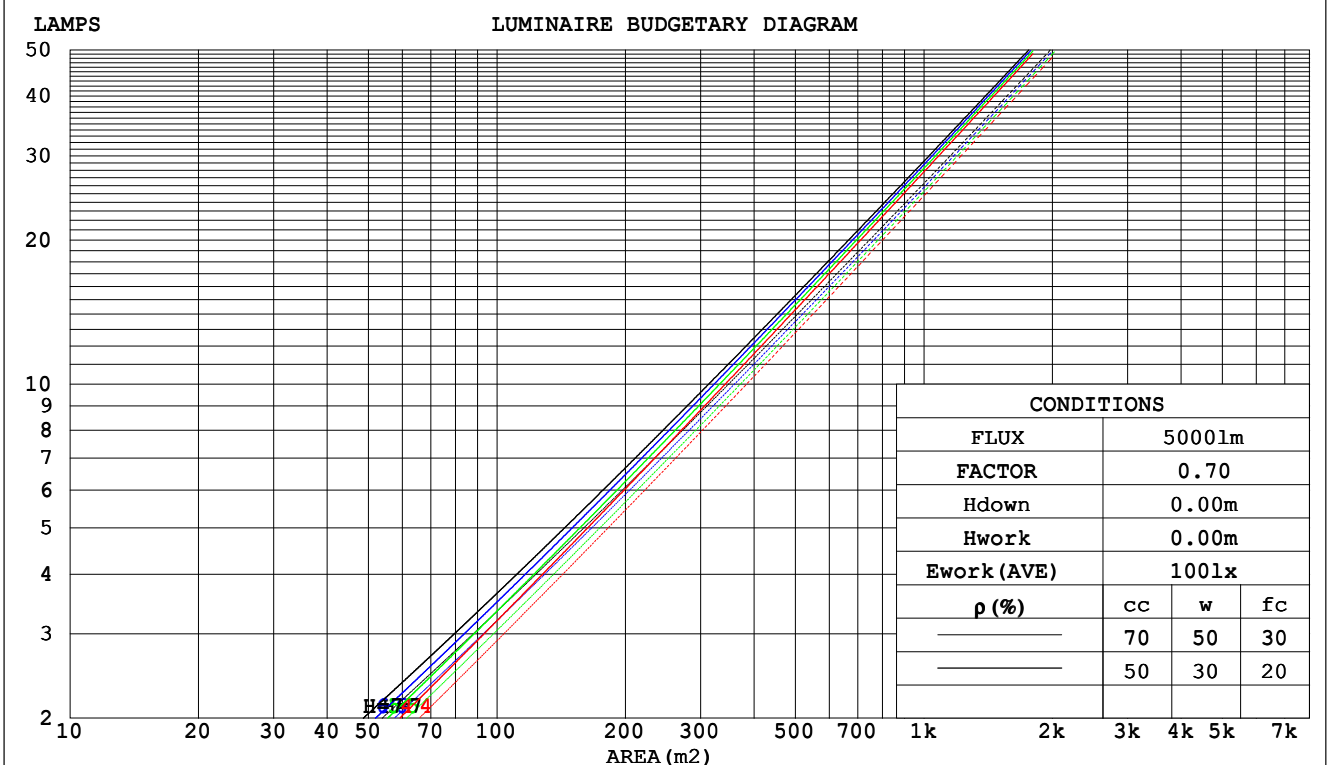
γ Range: 0 - 90DEG
 γ Interval: 0.5DEG
 Test System: EVERFINE GO-HD5 SYSTEM V2.0.407.13
 Humidity: 65.0%
 Test Distance: 9.400m [K=1.0000]
 Remarks:



CU AND LUMINAIRE BUDGETARY ESTIMATE DIAGRAM

NAME: H	DIM.:	WEIGHT:
MFR.: CLF		

pcc	80%			70%			50%			30%			10%			0
pw	50%	30%	10%	50%	30%	10%	50%	30%	10%	50%	30%	10%	50%	30%	10%	0
pfc	20%			20%			20%			20%			20%			0
RCR	RCR:Room Cavity Ratio															
	Coefficients of Utilization(CU)															
0.0	1.19	1.19	1.19	1.16	1.16	1.16	1.11	1.11	1.11	1.06	1.06	1.06	1.02	1.02	1.02	1.00
1.0	1.12	1.10	1.08	1.10	1.08	1.07	1.06	1.05	1.04	1.03	1.01	1.00	.99	.98	.98	.96
2.0	1.07	1.03	1.01	1.05	1.02	.99	1.02	.99	.97	.99	.97	.95	.96	.95	.93	.92
3.0	1.01	.97	.94	1.00	.96	.94	.98	.95	.92	.95	.93	.91	.93	.91	.89	.88
4.0	.97	.92	.89	.96	.92	.89	.94	.90	.88	.92	.89	.87	.90	.88	.86	.84
5.0	.93	.88	.85	.92	.88	.84	.90	.86	.84	.89	.85	.83	.87	.84	.82	.81
6.0	.89	.84	.81	.88	.84	.81	.87	.83	.80	.85	.82	.80	.84	.81	.79	.78
7.0	.85	.81	.77	.85	.80	.77	.84	.80	.77	.82	.79	.76	.81	.78	.76	.75
8.0	.82	.77	.74	.81	.77	.74	.81	.77	.74	.80	.76	.73	.79	.76	.73	.72
9.0	.79	.74	.71	.79	.74	.71	.78	.74	.71	.77	.73	.71	.76	.73	.71	.70
10.0	.76	.72	.69	.76	.71	.69	.75	.71	.68	.74	.71	.68	.74	.70	.68	.67



C Range: 0 - 360DEG
 C Interval: 30.0DEG
 Test Speed: HIGH
 Temperature:25.3DEG
 Operators:Danny
 Test Date:2022-03-18

γ Range: 0 - 90DEG
 γ Interval: 0.5DEG
 Test System:EVERFINE GO-HD5 SYSTEM V2.0.407.13
 Humidity:65.0%
 Test Distance:9.400m [K=1.0000]
 Remarks:



WEC AND CCEC

NAME: H	DIM.:	WEIGHT:
MFR.: CLF		

pcc	80%			70%			50%			30%			10%			0
pw	50%	30%	10%	50%	30%	10%	50%	30%	10%	50%	30%	10%	50%	30%	10%	0
pfc	20%			20%			20%			20%			20%			0
RCR	RCR:Room Cavity Ratio						Wall Exitance Coefficients(WEC)									
0.0																
1.0	.147	.084	.026	.140	.080	.025	.128	.073	.023	.116	.067	.022	.106	.061	.020	
2.0	.137	.075	.023	.132	.073	.022	.121	.067	.021	.112	.063	.020	.103	.058	.018	
3.0	.129	.068	.021	.124	.066	.020	.115	.063	.019	.107	.059	.018	.100	.055	.017	
4.0	.121	.063	.019	.118	.062	.018	.110	.058	.017	.103	.056	.017	.097	.053	.016	
5.0	.115	.059	.017	.112	.057	.017	.106	.055	.016	.100	.053	.016	.094	.050	.015	
6.0	.110	.055	.016	.107	.054	.016	.101	.052	.015	.096	.050	.015	.091	.048	.014	
7.0	.105	.052	.015	.102	.051	.015	.097	.049	.014	.093	.048	.014	.089	.046	.014	
8.0	.100	.049	.014	.098	.048	.014	.094	.047	.013	.090	.046	.013	.086	.044	.013	
9.0	.096	.047	.013	.094	.046	.013	.090	.045	.013	.087	.044	.012	.084	.042	.012	
10.0	.093	.044	.012	.091	.044	.012	.087	.043	.012	.084	.042	.012	.081	.041	.012	

pcc	80%			70%			50%			30%			10%			0
pw	50%	30%	10%	50%	30%	10%	50%	30%	10%	50%	30%	10%	50%	30%	10%	0
pfc	20%			20%			20%			20%			20%			0
RCR	RCR:Room Cavity Ratio						Ceiling Cavity Exitance Coefficients(CCEC)									
0.0	.190	.190	.190	.163	.163	.163	.111	.111	.111	.064	.064	.064	.020	.020	.020	
1.0	.169	.158	.147	.145	.135	.127	.099	.093	.088	.057	.054	.051	.018	.017	.016	
2.0	.152	.133	.117	.130	.114	.101	.089	.079	.070	.051	.046	.041	.016	.015	.013	
3.0	.137	.113	.094	.118	.098	.082	.081	.068	.057	.047	.040	.034	.015	.013	.011	
4.0	.125	.098	.077	.108	.085	.067	.074	.059	.047	.043	.035	.028	.014	.011	.009	
5.0	.115	.086	.064	.099	.074	.056	.068	.052	.040	.040	.031	.023	.013	.010	.008	
6.0	.107	.076	.054	.092	.066	.047	.063	.046	.033	.037	.027	.020	.012	.009	.007	
7.0	.100	.068	.046	.086	.059	.040	.059	.041	.028	.034	.024	.017	.011	.008	.006	
8.0	.094	.062	.040	.081	.053	.035	.056	.038	.024	.032	.022	.015	.011	.007	.005	
9.0	.088	.056	.034	.076	.049	.030	.053	.034	.021	.031	.020	.013	.010	.007	.004	
10.0	.084	.052	.030	.072	.045	.026	.050	.031	.019	.029	.019	.011	.009	.006	.004	

C Range: 0 - 360DEG
 C Interval: 30.0DEG
 Test Speed: HIGH
 Temperature:25.3DEG
 Operators:Danny
 Test Date:2022-03-18

γ Range: 0 - 90DEG
 γ Interval: 0.5DEG
 Test System:EVERFINE GO-HD5 SYSTEM V2.0.407.13
 Humidity:65.0%
 Test Distance:9.400m [K=1.0000]
 Remarks:



UGR(Unified Glare Rating) Table

NAME: H		DIM.:					WEIGHT:				
MFR.: CLF											
ceiling/cavity		0.7	0.7	0.5	0.5	0.3	0.7	0.7	0.5	0.5	0.3
walls		0.5	0.3	0.5	0.3	0.3	0.5	0.3	0.5	0.3	0.3
working plane		0.2	0.2	0.2	0.2	0.2	0.2	0.2	0.2	0.2	0.2
Room dimensions		Viewed crosswise					Viewed endwise				
x = 2H	y = 2H	-3.2	-2.5	-3.0	-2.3	-2.2	-3.5	-2.8	-3.3	-2.6	-2.4
	3H	-3.4	-2.7	-3.1	-2.5	-2.3	-3.6	-2.9	-3.4	-2.8	-2.6
	4H	-3.4	-2.8	-3.2	-2.6	-2.4	-3.7	-3.0	-3.4	-2.8	-2.6
	6H	-3.5	-2.9	-3.2	-2.7	-2.4	-3.7	-3.1	-3.5	-2.9	-2.7
	8H	-3.5	-3.0	-3.2	-2.7	-2.5	-3.8	-3.2	-3.5	-3.0	-2.7
	12H	-3.6	-3.0	-3.3	-2.8	-2.5	-3.8	-3.3	-3.5	-3.0	-2.7
4H	2H	-3.5	-2.8	-3.2	-2.6	-2.4	-3.7	-3.1	-3.4	-2.9	-2.6
	3H	-3.6	-3.0	-3.3	-2.8	-2.5	-3.9	-3.3	-3.5	-3.0	-2.8
	4H	-3.7	-3.2	-3.3	-2.9	-2.6	-3.9	-3.4	-3.6	-3.1	-2.8
	6H	-3.8	-3.3	-3.4	-3.0	-2.6	-4.0	-3.5	-3.6	-3.2	-2.9
	8H	-3.8	-3.4	-3.4	-3.0	-2.7	-4.0	-3.6	-3.6	-3.3	-2.9
	12H	-3.8	-3.4	-3.4	-3.1	-2.7	-4.1	-3.7	-3.6	-3.3	-2.9
8H	4H	-3.8	-3.4	-3.4	-3.1	-2.7	-4.1	-3.7	-3.7	-3.3	-2.9
	6H	-3.9	-3.5	-3.5	-3.1	-2.7	-4.1	-3.8	-3.7	-3.4	-3.0
	8H	-3.9	-3.6	-3.5	-3.2	-2.8	-4.2	-3.8	-3.7	-3.4	-3.0
	12H	-3.9	-3.7	-3.5	-3.2	-2.8	-4.2	-3.9	-3.7	-3.5	-3.0
12H	4H	-3.9	-3.5	-3.5	-3.1	-2.7	-4.1	-3.7	-3.7	-3.4	-3.0
	6H	-3.9	-3.6	-3.5	-3.2	-2.8	-4.2	-3.9	-3.7	-3.5	-3.0
	8H	-4.0	-3.7	-3.5	-3.3	-2.8	-4.2	-3.9	-3.7	-3.5	-3.0
Variations with the observer position at spacings:											
S = 1.0H		+ 1.9 / - 1.5					+ 3.3 / - 1.7				
1.5H		+ 3.5 / - 1.4					+ 5.3 / - 1.8				
2.0H		+ 1.1 / - 0.8					+ 1.4 / - 0.7				

CIE Pub.117, 3165 lm Total Lamp Luminous Flux Correct (8log(F/F0) = 4.0)
 Area: 0.1 m2

C Range: 0 - 360DEG
 C Interval: 30.0DEG
 Test Speed: HIGH
 Temperature:25.3DEG
 Operators:Danny
 Test Date:2022-03-18

γ Range: 0 - 90DEG
 γ Interval: 0.5DEG
 Test System:EVERFINE GO-HD5 SYSTEM V2.0.407.13
 Humidity:65.0%
 Test Distance:9.400m [K=1.0000]
 Remarks:



UTILIZATION FACTORS TABLE

NAME: H	DIM.:	WEIGHT:
MFR.: CLF		

REFLECTANCE										
Ceiling	0.8	0.8	0.8	0.7	0.7	0.7	0.5	0.5	0.5	0
Walls	0.7	0.5	0.3	0.7	0.5	0.3	0.7	0.5	0.3	0
Working plane	0.2	0.2	0.2	0.2	0.2	0.2	0.2	0.2	0.2	0
ROOM INDEX	UTILIZATION FACTORS (PERCENT) $k(RI) \times RCR = 5$									
k = 0.60	91	86	82	91	86	82	90	85	82	79
0.80	98	93	90	98	93	90	97	92	89	86
1.00	102	97	94	101	97	94	100	96	93	89
1.25	105	101	98	104	100	97	103	99	97	93
1.50	108	104	101	107	103	100	104	101	99	95
2.00	110	106	103	109	105	103	106	103	101	96
2.50	111	108	105	110	107	104	107	104	103	97
3.00	113	110	107	111	108	106	108	106	104	98
4.00	115	112	110	113	111	109	109	107	106	99
5.00	116	114	112	114	112	111	110	109	107	100
ROOM INDEX	UF(total)									Direct
According to DIN EN 13032-2 2004			Suspended				SHRNOM = 1.25			

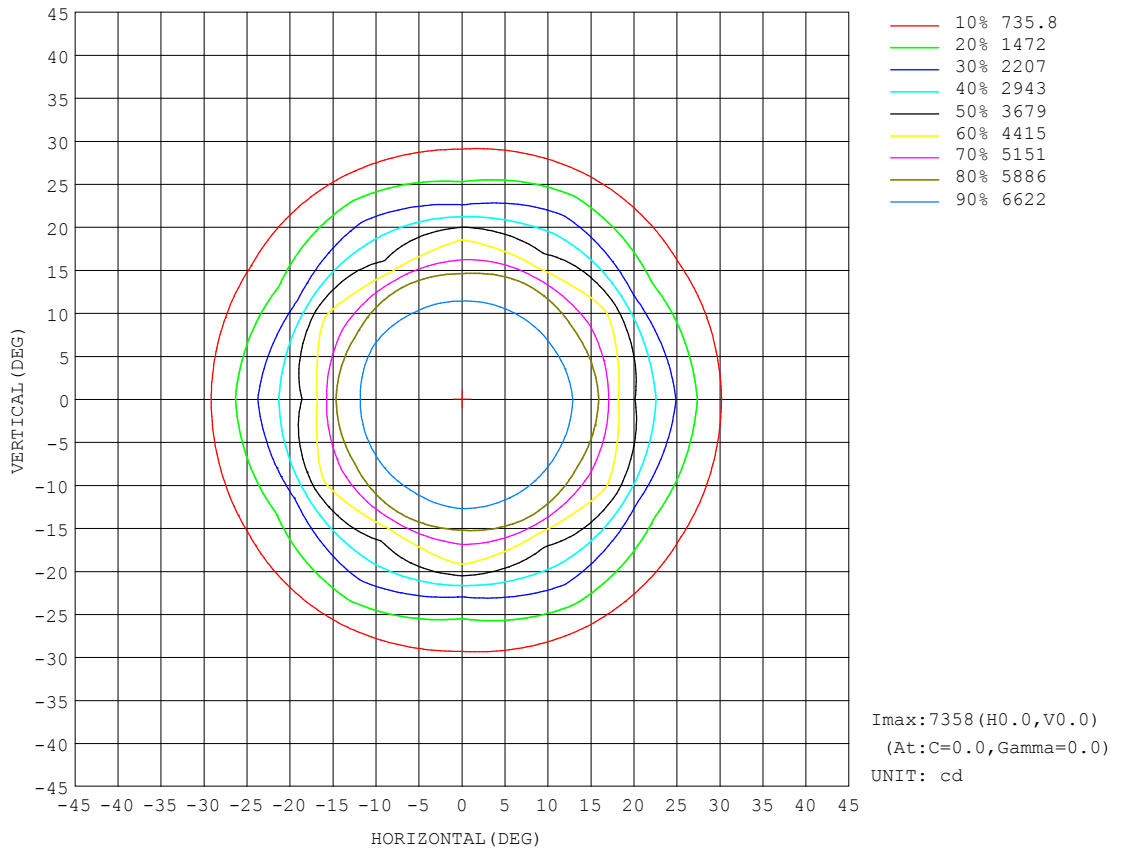
C Range: 0 - 360DEG
 C Interval: 30.0DEG
 Test Speed: HIGH
 Temperature: 25.3DEG
 Operators: Danny
 Test Date: 2022-03-18

γ Range: 0 - 90DEG
 γ Interval: 0.5DEG
 Test System: EVERFINE GO-HD5 SYSTEM V2.0.407.13
 Humidity: 65.0%
 Test Distance: 9.400m [K=1.0000]
 Remarks:



ISOCANDELA DIAGRAM

NAME: H	DIM.:	WEIGHT:
MFR.: CLF		



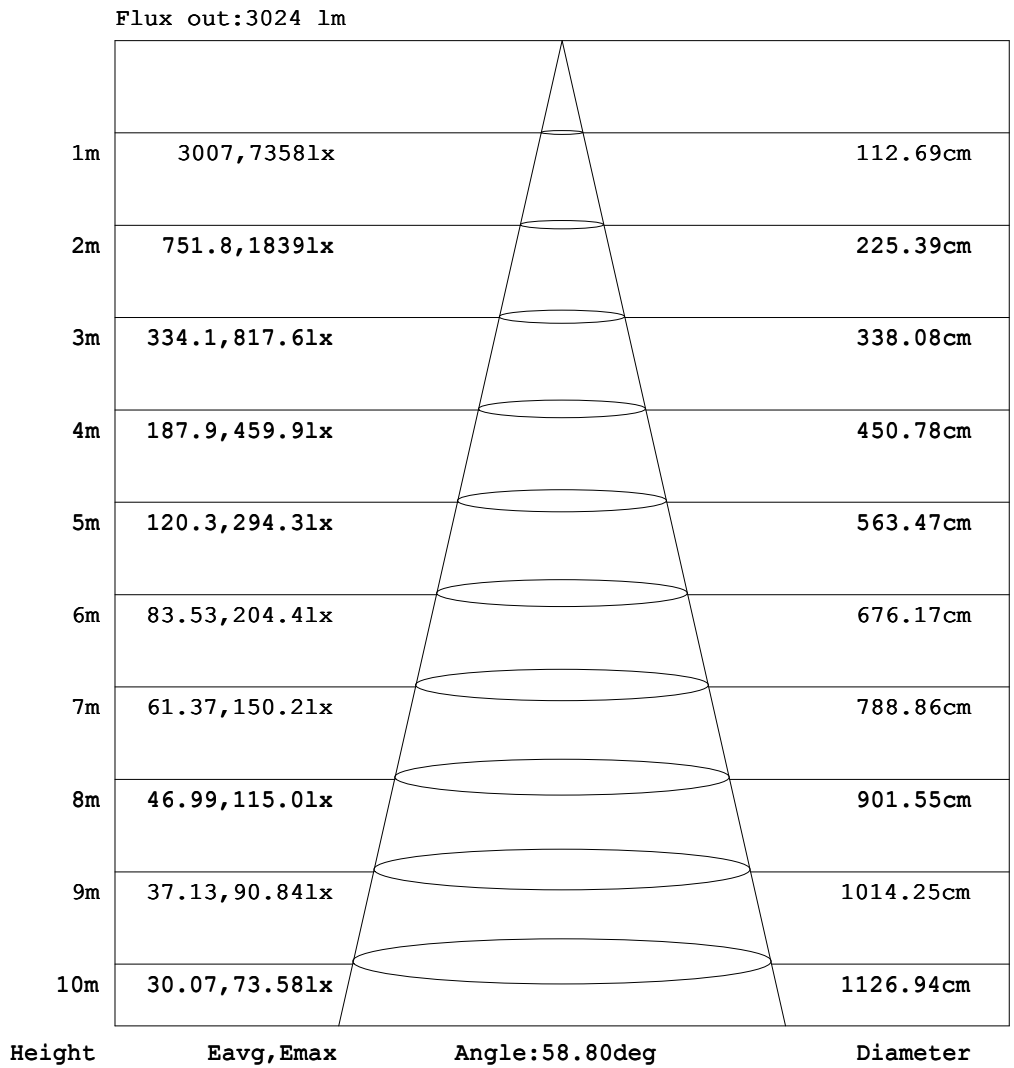
C Range: 0 - 360DEG
C Interval: 30.0DEG
Test Speed: HIGH
Temperature: 25.3DEG
Operators: Danny
Test Date: 2022-03-18

γ Range: 0 - 90DEG
 γ Interval: 0.5DEG
Test System: EVERFINE GO-HD5 SYSTEM V2.0.407.13
Humidity: 65.0%
Test Distance: 9.400m [K=1.0000]
Remarks:



AAI Figure

NAME: H	DIM.:	WEIGHT:
MFR.: CLF		



Note:The Curves indicate the illuminated area and the average illumination when the luminaire is at different distance.

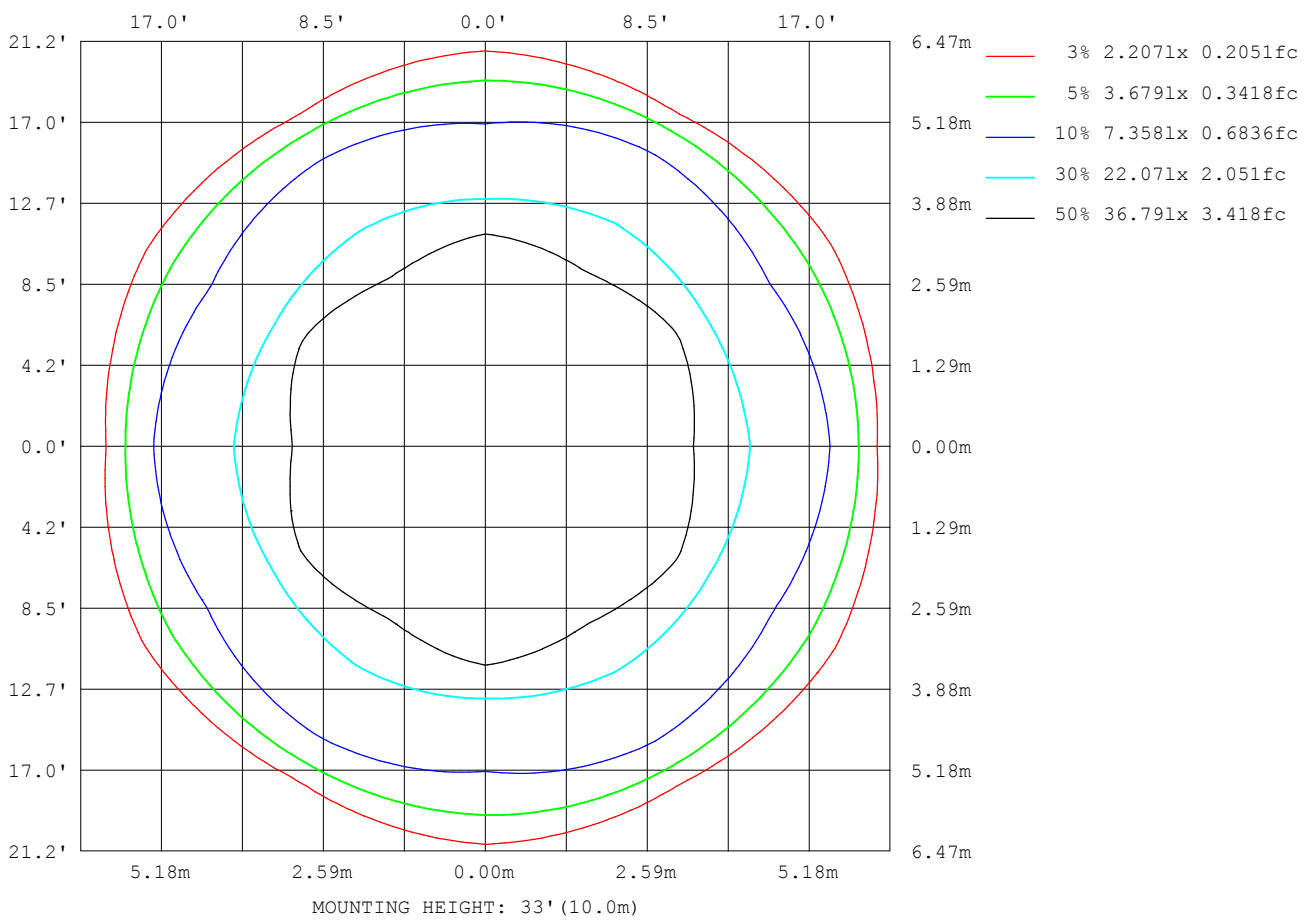
C Range: 0 - 360DEG
C Interval: 30.0DEG
Test Speed: HIGH
Temperature:25.3DEG
Operators:Danny
Test Date:2022-03-18

γ Range: 0 - 90DEG
γ Interval: 0.5DEG
Test System:EVERFINE GO-HD5 SYSTEM V2.0.407.13
Humidity:65.0%
Test Distance:9.400m [K=1.0000]
Remarks:



ISOLUX DIAGRAM

NAME: H	DIM.:	WEIGHT:
MFR.: CLF		



C Range: 0 - 360DEG
C Interval: 30.0DEG
Test Speed: HIGH
Temperature:25.3DEG
Operators:Danny
Test Date:2022-03-18

γ Range: 0 - 90DEG
γ Interval: 0.5DEG
Test System:EVERFINE GO-HD5 SYSTEM V2.0.407.13
Humidity:65.0%
Test Distance:9.400m [K=1.0000]
Remarks:



LED Avg.L Report

NAME: H	DIM.:	WEIGHT:
MFR.: CLF		

AvgL	cd/m2
L_0~180 (65) av	31
L_0~180 (75) av	40
L_0~180 (85) av	68
L_90~270 (65) av	42
L_90~270 (75) av	49
L_90~270 (85) av	72
L_45 (65) av	36
L_45 (75) av	44
L_45 (85) av	68

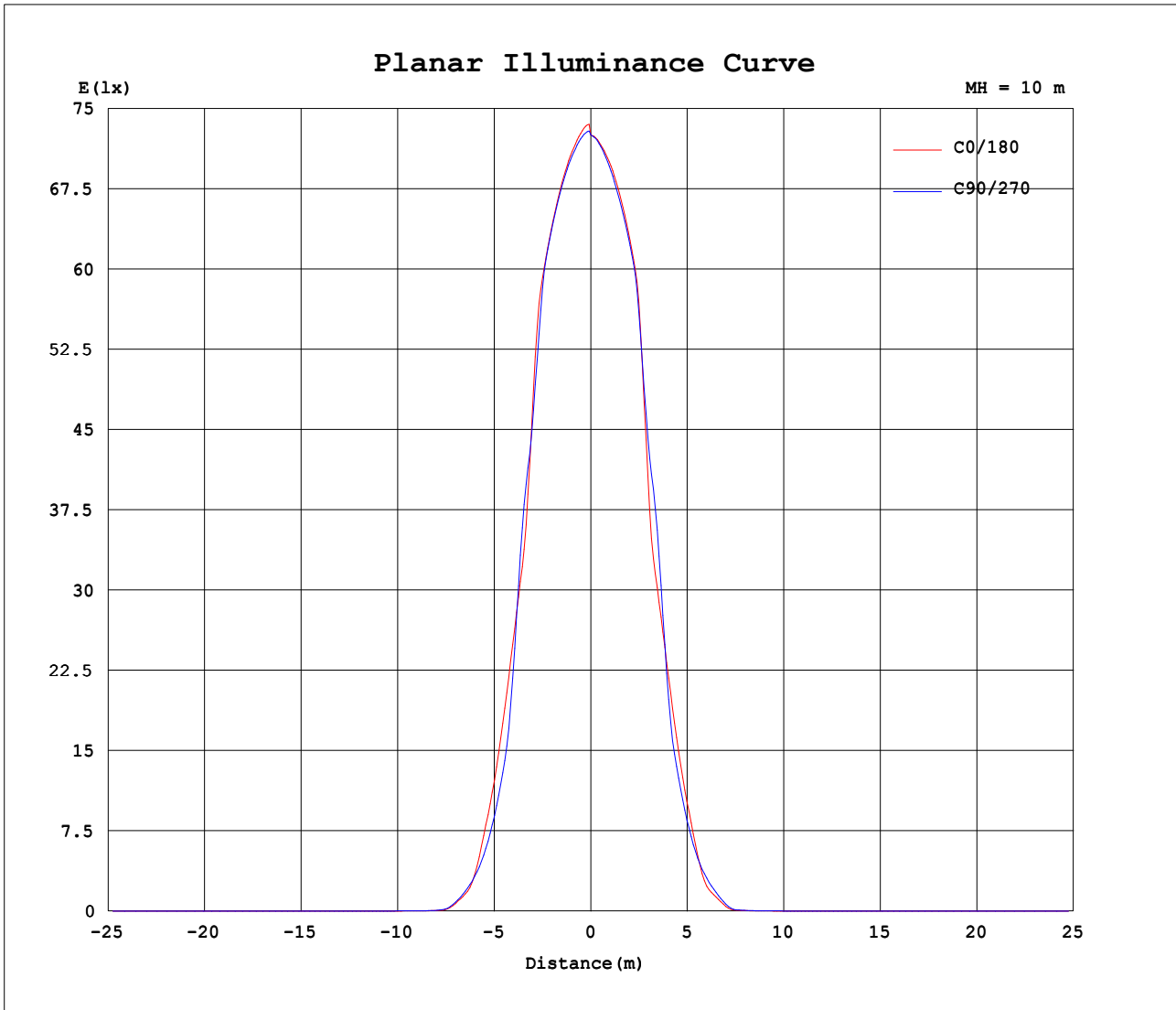
Standard: GB/T 29293-2012

C Range: 0 - 360DEG
C Interval: 30.0DEG
Test Speed: HIGH
Temperature:25.3DEG
Operators:Danny
Test Date:2022-03-18

γ Range: 0 - 90DEG
γ Interval: 0.5DEG
Test System:EVERFINE GO-HD5 SYSTEM V2.0.407.13
Humidity:65.0%
Test Distance:9.400m [K=1.0000]
Remarks:



Planar Illuminance Curve



C Range: 0 - 360DEG
C Interval: 30.0DEG
Test Speed: HIGH
Temperature:25.3DEG
Operators:Danny
Test Date:2022-03-18

γ Range: 0 - 90DEG
 γ Interval: 0.5DEG
Test System:EVERFINE GO-HD5 SYSTEM V2.0.407.13
Humidity:65.0%
Test Distance:9.400m [K=1.0000]
Remarks:

