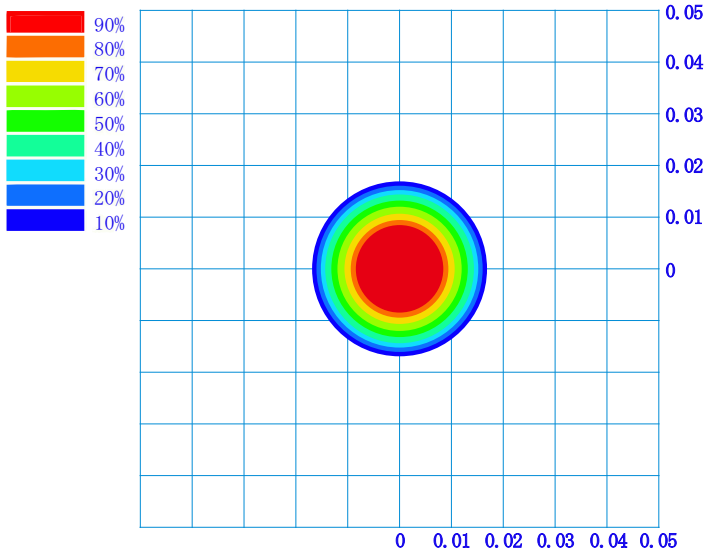


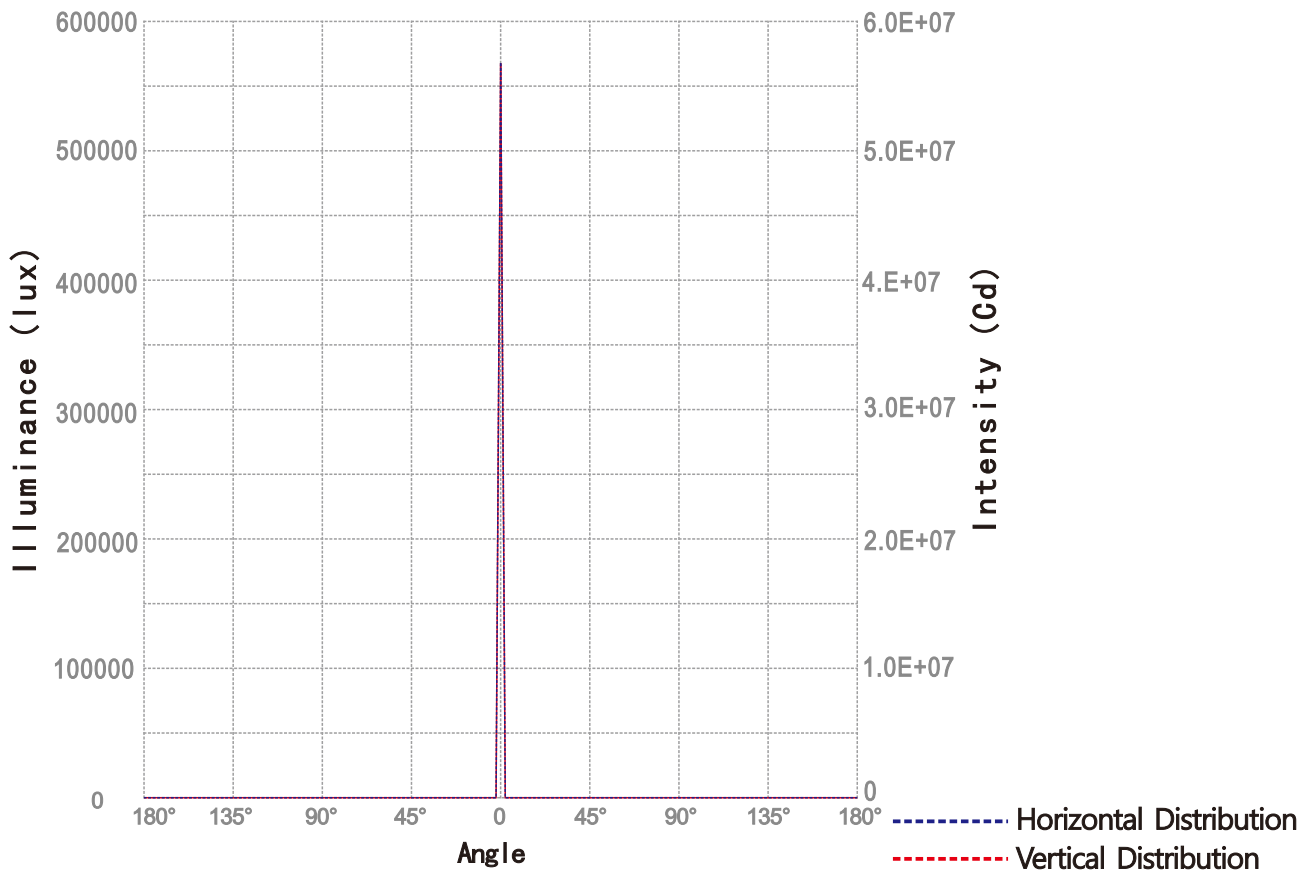
Iso-illuminance diagram



Testing data

total luminaire power(W)	578	lumen output of lamp (lm)	28000
throw distance(m)	10	diameter of test spot (m)	0.34
elevation angle for test(°)	0	environment stray light (lx)	10
centre illuminance (lx)	560000	field angle(°)	1.8
maximum illuminance (lx)	564000	beam angle(°)	1
deviating distance of the maximum illuminance point(cm)	3	azimuth of the maximum illuminance point(°)	108
diameter of effective spot (m)	0.34	effective lumen (lm)	16290
diameter of half-peak illuminance spot (m)	0.17	average illuminance (lx)	2296
throw distance multiplier	0.034	uniformity of illuminance(%)	48
luminaire efficiency(%)		luminaire efficacy (lm/W)	32.1

Illuminance and Intensity plot



throw distance(m):10
 maximum illuminance(lux): 564000
 maximum (lcd): 5.64×10^7

Photometric Report

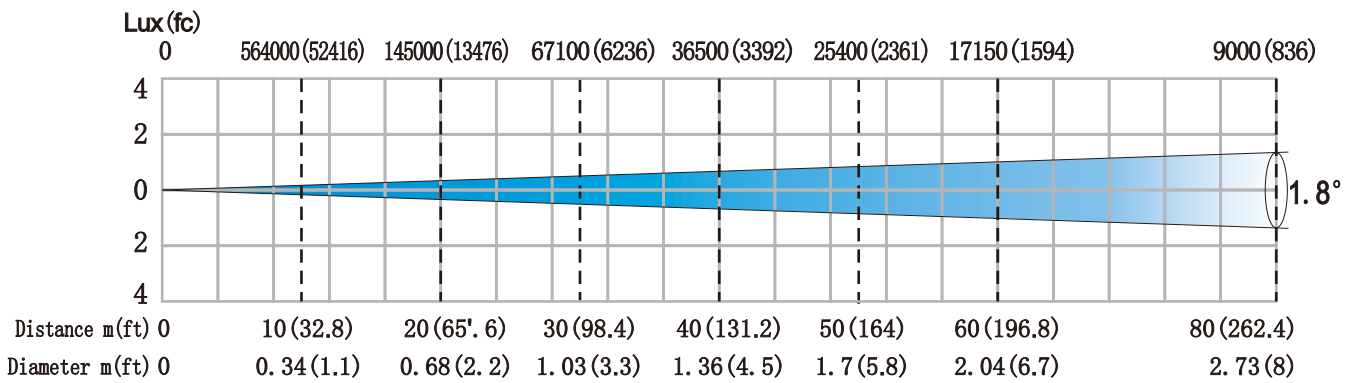
Beam Details

Poseidon distance, spot diameter and illumination diagram

Standard(1.8°)

Lamp:USHIO NSL400L

Lamp Total Output:28000 lumens



Beam Illuminances from 10-80m(16.4-164ft)

Distance	10m	20m	30m	40m	50m	60m	80m
Lux	564000	145000	67000	36500	25400	17150	9000
Distance	32.8ft	65.6ft	98.4ft	131.2ft	164ft	196.8ft	262.4ft
FC	52416	13476	6236	3392	2361	1594	836